

*Need Liability Coverage for an Event  
You're Having on a Fairground?  
Talk to the Fair Office First!*



*California Fair Services Authority's  
Special Events Liability Program  
provides general liability coverage for  
special events operators using California  
fair facilities for non-hazardous events.  
Created as an inexpensive alternative to  
commercial coverage, the Special Events  
Program is available from the fair at  
which the facilities are being used.*

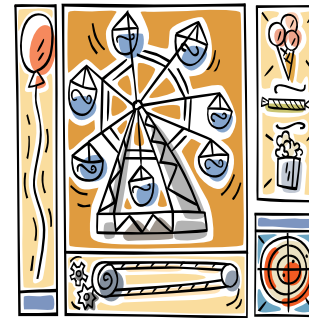
*California Fair Services Authority  
(CFSFA) is a joint powers authority  
operating as an independent, not-for-  
profit public agency. CFSFA manages  
and administers a variety of pooled  
risk protection programs exclusively  
for California's fairs.*



**Special Events  
Liability Program**

California Fair  
Services Authority  
1776 Tribute Road, Suite 100  
Sacramento, CA 95815

## Special Events Liability Program



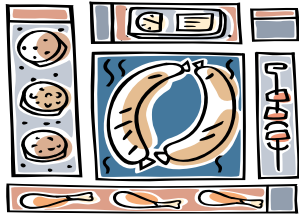
Short-term liability coverage for  
Commercial Exhibitors and Vendors,  
Food Concessionaires, and other  
Fair Facility Users

Phone: 916.263.6145  
Fax: 916.263.6159  
[www.cfsa.org](http://www.cfsa.org)



California Fair Services Authority

Revised 1.1.04



Coverage for Barbecues/Picnics, Exhibitions, Flower Shows, Home & Garden Shows, and much more.

### Why Do You Need Liability Protection?

The State of California requires every user of a fairground facility to provide liability insurance coverage naming the State and the fair where the event is held as additional insureds.

CFSA's Special Events Liability Program meets the State requirements by responding to claims by third parties alleging bodily injury or property damage from an event held at the fair.

### What Kind of Protection Am I Buying?

CFSA's Special Events Liability Program\* covers you, the fair and the State of California in case an accident occurs involving a third party during your event at a fair facility. The program provides protection similar to commercial general liability coverage, with combined single limits of \$1,000,000 per occurrence. This provides protection for liability arising from:

- Bodily Injury/Property Damage
- Personal and Advertising Injury
- Liquor Liability (for an additional premium)

*\*Important:* This is a summary only. It does not include all of the terms, conditions and limitations in the actual Special Events Program Memorandum of Coverage. A copy of the memorandum is available from the fair or by contacting CFSA at 916.263.6145.

### Special Events Rates Effective January 1, 2004

#### \$1,000,000 Limits

Category	Attendance	Rate Per Day
A	100 & Under	\$45
B	101-500	\$75
C	501-1,500	\$125
D	1,501-3,000	\$175
E	3,001-5,000	\$225
F	Over 5,000	Call CFSA

#### FAIRTIME

Food & Beverage Concessionaires  
& Exhibitors: \$108 per Booth

All other Concessionaires & Exhibitors:  
\$84 per Booth

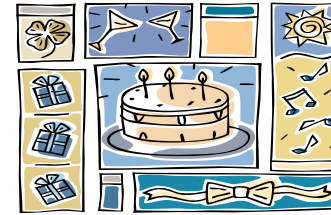
Independent Animal Exhibitor  
Small Livestock Classes  
(Poultry & Rabbit):  
\$18 per Exhibitor

Independent Animal Exhibitor  
Large Livestock Classes  
(Cattle, Goat, Horse, Sheep & Swine):  
\$35 per Exhibitor

#### Liquor Liability

Call CFSA at 916.263.6145 for a quote

*All matters regarding accidents  
or claims should be reported to the  
fair manager and California Fair Services  
Authority.*



Coverage available for Banquets/Social Gatherings, Graduation/Ceremonies, Performances, Weddings/Receptions and more.

### Why Purchase Special Events Coverage From CFSA?

- Coverage is available right at the fairground office.
- You don't have to request or wait for a certificate of insurance.
- CFSA's rates are very competitive with the commercial market.
- Coverage is extended outside the event date for set-up and teardown if noted in the rental agreement.
- Liquor Liability is designed specifically for use with short term licenses.
- Defense costs are included in the program limits.

### How Do I Purchase Special Events Coverage?

Just tell the fair office staff you would like to purchase Special Events Coverage from CFSA. They will do the rest. Every fair in California has a Special Events Rate card from CFSA with a list of the events covered under the program. Rates are determined by the number of people attending your event or for some categories, per day, per booth, or duration of stay.

There are no forms for you to fill out. Fair staff completes a Special Events Coverage Receipt and collects the required fee in the form of a money order or certified check made payable to CFSA. You'll receive a receipt for payment and Evidence of Coverage right on the spot. That's all there is to it!